

Vibrating Wire Jointmeter
User Manual



Man 037	3.1.1	04/07/2014	C.Spалton	Andy Small	Chris Rasmussen
Manual No.	Revision	Date	Originator	Checked	Authorised for Issue

Contents

Section 1 : Foreword	3
Section 2 : Introduction	4
2.01 Preliminary Tests	4
Section 3 : Installation	5
3.01 Installing the Socket.....	5
3.02 Installing the Gauge	5
3.03 Routing Cables	6
3.04 Splicing	6
3.05 Initial Data	6
Section 4 : Monitoring and Data Interpretation	7
4.01 Temperature Correction.....	8
4.02 Environmental Factors.....	8
Section 5 : Troubleshooting	9
Appendix A. Troubleshooting Flowchart	10
Appendix B. Declarations	11

Section 1 : Foreword

It is essential that the equipment covered by this manual is both installed and operated by competent and suitably qualified personnel. They must both **READ AND UNDERSTAND** the procedures outlined in this manual before attempting installation or operation of the equipment on site.

All systems are designed to operate consistently under normal field conditions but although their components are relatively robust for such sensitivity they will not survive mishandling or neglect. Treat all items with respect and handle with CARE.

Obviously these techniques can only serve as a general guide and will require modification to suit particular circumstances on site. If difficulties are encountered time will usually be saved by contacting Soil Instruments at the earliest opportunity.

Section 2 : Introduction

Soil Instruments Vibrating Wire Jointmeters are intended primarily for the measurement of joint openings between lifts or sections in mass concrete. However, they can also be installed in other applications such as across fracture zones in fully grouted boreholes.

The instrument is protected inside a PVC housing and consists of a Vibrating Wire sensing element in series with a calibrated spring which is, in turn, connected to the wire at one end and a connecting rod at the other. In its assembled form, each end of the Jointmeter is fixed to a PVC end block and M6 stud through a universal joint. The unit is fully sealed and operates at external water pressures of up to 7 bar.

As the connecting rod is slowly pulled out from the gauge body, the spring is elongated causing an increase in wire tension. This tension is directly proportional to the spring extension and the joint opening can therefore be determined very accurately by measuring the change in the tension in the wire using a Vibrating Wire readout unit.

Since sensing gauge itself is smaller than the protective PVC housing a degree of shearing motion can be accommodated. This is achieved by the use of universal-joint connections on each end of the gauge.

2.01 Preliminary Tests

Upon receipt of the instrument, the gauge should be immediately checked for proper operation (including the thermistor, if included). Connect the gauge leads to the readout unit. Check and record the gauge reading when the connecting rod end is pulled out approximately 3 mm.

A swivel ball joint between connecting rod and the spring protects the wire from damage due to rotation of the connecting rod. As the ball joint is not entirely friction free rotation of the connecting rod end may cause the wire to twist slightly before the ball rotates in the socket. This twist in the wire will result in a change in reading. In severe cases the wire which has torsional stresses added to pure tensile stresses induced by spring force will give a distorted signal. Check the Jointmeter by pulling the connecting rod end out of the body in small steps. At each pull out step a steady reading and clear ring of audio signal indicates a torsion free wire. Check the calibration sheet to determine the gauge range and pull the rod out to its maximum range. If the audio signal becomes dull with erratic reading during this check, the wire is under torsional stress. This shall be cleared by pulling the connecting rod out to 20% of the stroke and slowly releasing it. Slowly pull and release the rod a few times to help the ball turn in its socket and eliminate twist in the wire. Repeat the check again and ensure that the Jointmeter gives a clear steady signal throughout the range before it is installed.

Section 3 : Installation

The installation is carried out in two separate operations.

The socket is first placed in the first lift of concrete and then, when the formwork is removed, its protective plug is removed. The gauge is then screwed into the socket, extended slightly and then concreted into the next adjoining lift.

3.01 Installing the Socket

The socket should be installed in the first lift of concrete. It is important that the face of the socket must be coincident with the finished face of the concrete if it is to be accessible. The socket is plugged, temporarily to prevent concrete entering the socket and to provide a support for installation purposes.

The socket installation plug has an M8 threaded hole which is used to attach the plug and socket to concrete formwork. If the socket is not installed in this manner, the threaded hole in the plug should be sealed to prevent ingress of liquid concrete into the thread during pouring.

The socket can also be carefully welded to steel reinforcement or alternatively fixed with tie wire.

3.02 Installing the Gauge

After the formwork has been stripped and the socket exposed, remove the installation plug. At this stage the inside of the socket should be thoroughly cleaned and lightly coated with grease.

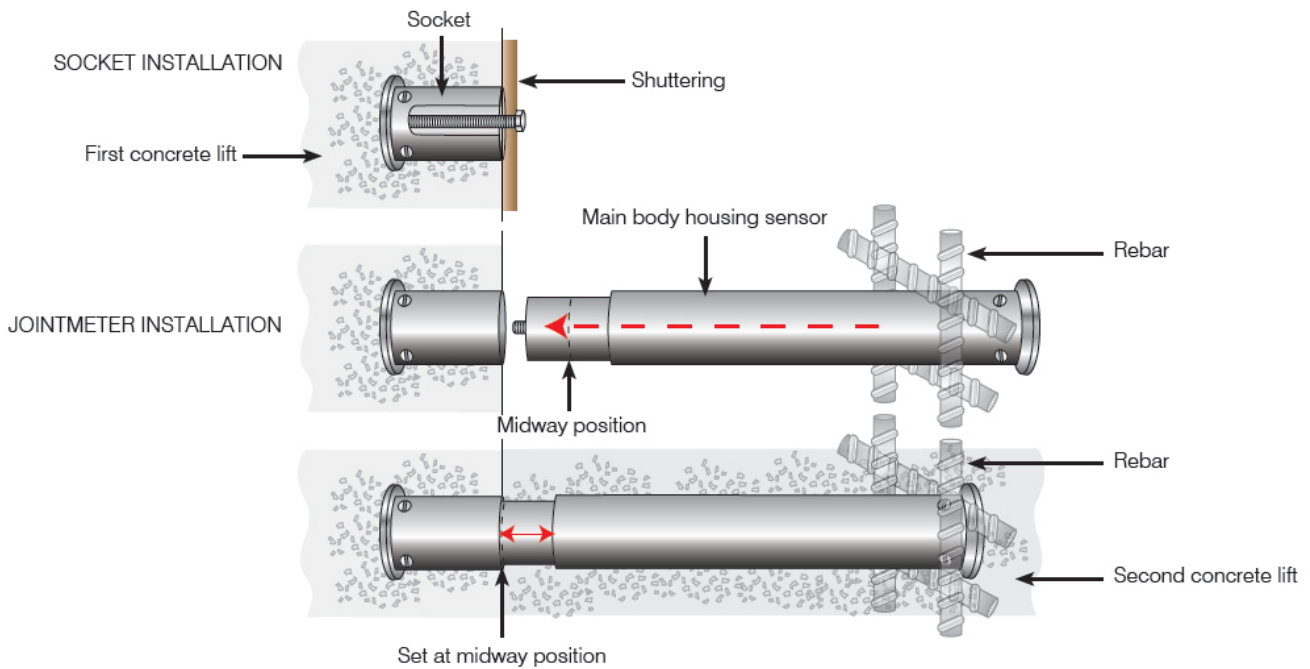
Before pushing the Jointmeter into the socket, ensure that the pin in the connector rod is inside the notch on the Jointmeter tube.

Place a small amount of thread-locking compound onto the threads of the stud on the connector rod and push the gauge fully into the socket. While applying an inward pressure, rotate the gauge clockwise until the rod is firmly fixed into the socket thread.

NOTE: If the armoured direct-burial cable is used, the cable bundle or reel should also be rotated to avoid crimping the cable.

Support and fix the gauge body and cable firmly in position prior to placing concrete. Readings should be taken and recorded from the gauge (and thermistor) just after installation and prior to placing the concrete. To allow for slight compression of the gauge it is recommended that the gauge be set at approximately 25% of its range in tension. Remember that the gauge must not be rotated after pulling it back from the socket. If the gauge has to be removed from the socket, it should be pushed back in until the pin engages into the notch and then rotated counter-clockwise until it comes loose. This may be difficult once the thread locking compound has set.

During connecting it is vital that the Jointmeter is protected from any damage. No vibrating pokers or rodding of the concrete should be carried out near the Jointmeter. Concrete compaction should be carried out by hand and with extreme care.



3.03 Routing Cables

Cable should be protected to avoid damage during the placing and compaction of the concrete.

The cables from the instrument can be spliced onto armoured, direct burial cable which can be safely routed through concrete without protection. Ensure that sharp kinks and bends are avoided and that no rodding or vibrating pokers are allowed close to the cable.

3.04 Splicing

Because Vibrating Wire transducers output frequency or period, a direct derivative of frequency, rather than current or voltage, slight variations in cable resistance have no effect on Jointmeter readings. Consequently, splicing has no effect on instrument performance allowing cables to be spliced and routed to junction boxes and then connected to multi conductor cables for transmission to a central location.

Splicing should be carried out using an epoxy splicing kit and in accordance with the instructions included in the kit.

3.05 Initial Data

Once the concrete has been placed and the initial set has been achieved, a 'Base' or 'Initial' Reading must be recorded. This value should be recorded in Period x 10^7 units and since it will be used in the calculation of all subsequent readings, it is good practice to take a number of readings and use the average value.

Section 4 : Monitoring and Data Interpretation

Each Soil Instruments Vibrating Wire Jointmeter is calibrated and is supplied with a standard Calibration Certificate giving the Gauge constant and information on atmospheric conditions at the time of calibration.

Calibration is carried out by pulling out the connecting rod to full range while it is coupled to a micrometer. (Slip gauges can also be used for this purpose by wedging them between the connecting rod pin and the body tube). Readings are taken at full range displacement/extension, a number of intermediate points and at zero extension. The gauge factor is then calculated using the expression given in the Calibration Certificate specimen.

Following the installation instructions the reference reading is noted which indicates zero movement. Subsequent data obtained from the Jointmeter can be reduced to linear movement in millimetres by using the gauge constant in the equation given in the Calibration Certificate. An example of data reduction is as follows;

Gauge Constant: K mm: -120.4254

Reference Reading No: 6320
(Zero measurement)

Example 1: Subsequent Reading N_1 : 4820

Equivalent Linear Movement (Extension): $\Delta L = K \times \left(\frac{10^7}{N_o^2} - \frac{10^7}{N_1^2} \right)$

$$\Delta L = 21.685\text{mm}$$

Example 2: Subsequent Reading N_2 : 6740

Equivalent Linear Movement (Extension): $-120.4254 \left(\frac{10^7}{\{6320\}^2} - \frac{10^7}{\{6740\}^2} \right)$

$$\Delta L = -3.6404\text{mm}$$

Note: A negative sign represents a decrease in the joint width.

4.01 Temperature Correction

The Jointmeter working elements are made primarily of steel and stainless steel and are affected by changing temperature to a certain predictable degree. In case of large temperature changes application of temperature correction will improve the accuracy of the measurements. The approximate temperature effect on the gauge is -0.02mm per degree Celsius.

Hence for a temperature increase of 10° C Jointmeter will indicate (-0.02×10) -0.2mm reduction in linear measurement. Correction is applied by adding 0.2mm to the result indicated by the Jointmeter reading. A fall in temperature will result in a positive change in linear measurement which can be corrected accordingly.

Physical dimensional changes due to temperature in the Jointmeter and the structure on which it is mounted are of the order of $10^{-6}\text{m/m/}^\circ\text{C}$ and can be neglected.

Barometric pressure changes do not affect the Jointmeter reading.

4.02 Environmental Factors

Since the purpose of the Jointmeter installation is to monitor site conditions, factors which may affect these conditions should always be observed and recorded. Seemingly minor effects may have a real influence on the behaviour of the structure being monitored and may give an early indication of potential problems. Such factors include but are not limited to: blasting, rainfall, tidal levels, excavation and fill levels and sequences, site traffic, temperature and barometric changes, changes in personnel reading the instruments, nearby construction activities and seasonal changes.

Section 5 : Troubleshooting

If a failure of any Vibrating Wire transducer or the electrical cable is suspected, the following steps can be followed. The transducers themselves are sealed and cannot be opened for inspection. The "Troubleshooting Flowchart" should also be followed if any instrument failures are suspected.

The steps below and the Troubleshooting Flowchart are applicable generally to any Vibrating Wire instrument.

STEP 1

Before any of the following steps are followed, the readout unit should be used to verify the stability of the reading and the audio signal from the portable logger should be heard. An unstable (wildly fluctuating) reading from a transducer, or an unsteady audio signal are both indications of possible problems with instruments or their related electrical cables.

If a portable data logger is giving faulty readings or audio signals from all transducers, a faulty readout unit must be suspected. Another readout unit should be used to check the readings from the transducers and Soil Instruments Ltd. should be consulted about the faulty readout unit.

STEP 2

The resistance across the two conductors of the electrical cable should be checked. This can be done using a multimeter device across the two exposed conductors if the cable has not been connected to a terminal cabinet, or can be done just as easily across the two conductors if the instrument has been connected to such a terminal (or datalogger).

The resistance across the two conductors should be approximately of the order of 120° to 180°. The majority of this resistance will come from the transducer (say approximately 130°).

Before proceeding to Steps 3 and 4, the continuity should be checked between conductors and earthing screen of the electrical cable. If continuity exists, a damaged cable is confirmed.

STEP 3

If the resistance across the two conductors is much higher than the values quoted in "STEP 1" (or is infinite), a severed cable must be suspected.

STEP 4

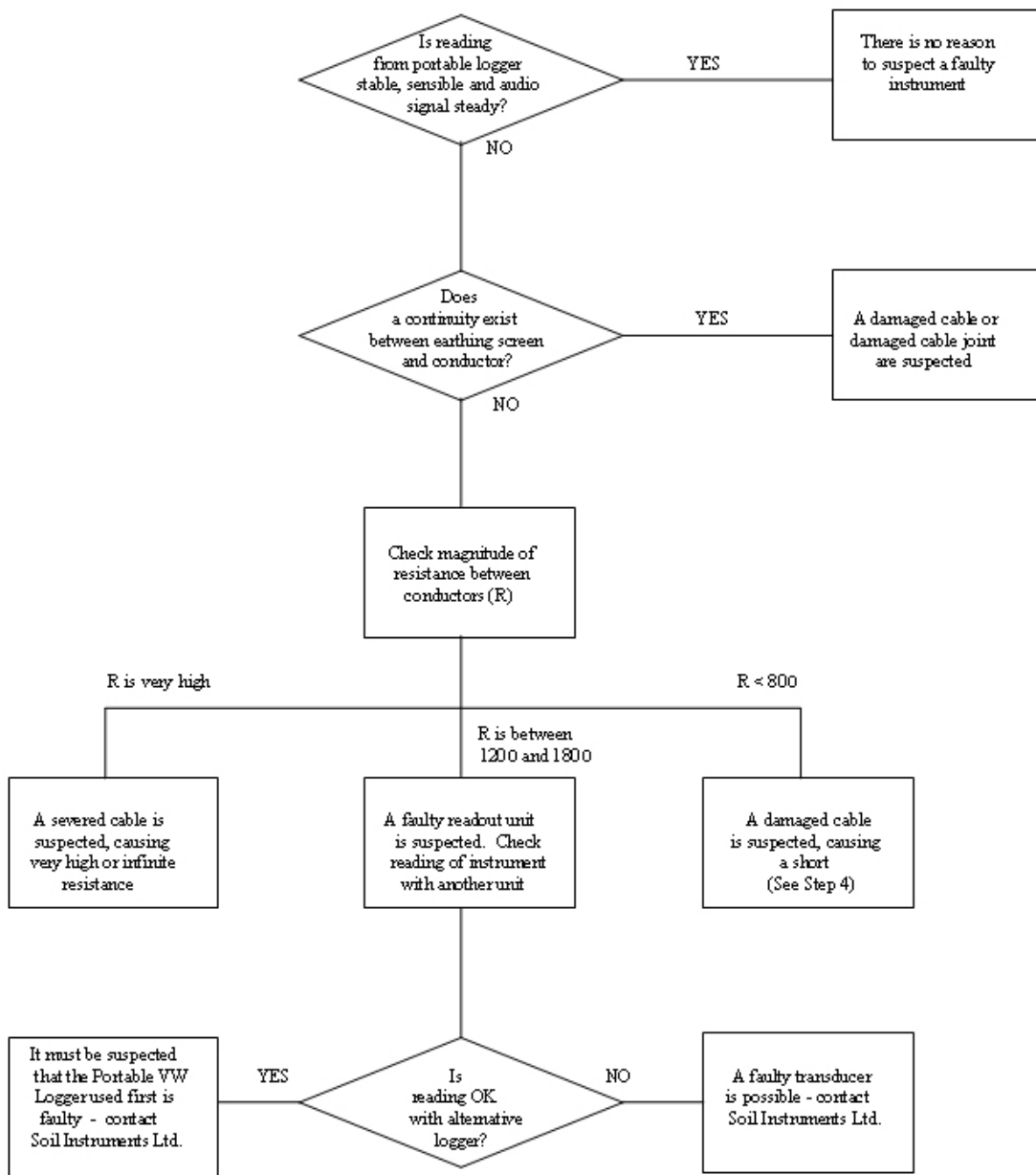
If the resistance across the two conductors is much lower than the values quoted in "STEP 1" (say 80° or less) it is likely that cable damage has occurred causing a short in the circuit.

STEP 5

If the resistance is within the values quoted in "STEP 1" (i.e. 120° to 180°), AND no continuity exists between conductor and earth screen and on checking the reading from the transducer, it proves to be still unstable or wildly fluctuating, it must be assumed that the integrity of the circuit is good. A faulty transducer could be suspected if neighbouring construction activities do not account for the anomaly Soil Instruments should be consulted.

If the point at which the cable is damaged is found, the cable can then be spliced in accordance with recommended procedures.

Appendix A. Troubleshooting Flowchart



Appendix B. Declarations



EU Declaration of Conformity

Soil Instruments Ltd., located at 34 Bell Lane, Uckfield, East Sussex, TN22, 1QL, United Kingdom.

We hereby declare that the devices described below are in conformity with the directives listed. In the event of unauthorised modification of any devices listed below, this declaration becomes invalid.

Type: VW Embedment Jointmeter

Product Model: J1 series 1021-530 to 1021-580

This declaration is issued under the sole responsibility of the manufacturer.

The products described above are in conformity with the relevant Union harmonisation legislation:

-RoHS Directive 2011/65/EU

-EMC Directive 2014/30/EU

References to the relevant harmonized standards used in relation to which conformity is declared:

-EN IEC 61326-1:2021 (EMC)

-EN IEC 63000:2018 (RoHS)

Signed for and on behalf of Soil Instruments Ltd

Philip Day

A handwritten signature in black ink, appearing to read "Philip Day", written over a horizontal line.

Date: 27 February 2023

Technical Manager,

Issued in: Bell Lane, Uckfield, East Sussex, TN22, 1QL, United Kingdom

**UK
CA** **Declaration of Conformity**



Soil Instruments Ltd., located at 34 Bell Lane, Uckfield, East Sussex, TN22, 1QL, United Kingdom.

We hereby declare that the devices described below are in conformity with the Statutory Instruments listed in accordance with UK Government Guidance. In the event of unauthorised modification of any devices listed below, this declaration becomes invalid.

Type: VW Embedment Jointmeter

Product Model: J1 series 1021-530 to 1021-580

This declaration is issued under the sole responsibility of the manufacturer.

Relevant UK Statutory Instruments and their amendments:

2016 No 1091	The Electromagnetic Compatibility Regulations 2016
2012 No 3032	The Restriction of the Use of Hazardous Substances in Electrical and Electronic Equipment Regulations 2012

References to the relevant designated standards used in relation to which conformity is declared:

-EN IEC 61326-1:2021 (EMC)

-EN IEC 63000:2018 (RoHS)

Signed for and on behalf of Soil Instruments Ltd

Philip Day

A handwritten signature in black ink, appearing to read "Philip Day", written over a horizontal line.

Date: 27 February 2023

Technical Manager,

Issued in: Bell Lane, Uckfield, East Sussex, TN22, 1QL, United Kingdom



Bell Lane, Uckfield, East Sussex

TN22 1QL, United Kingdom

t: +44 (0) 1825 765044

e: info@soilinstruments.com

w: www.soilinstruments.com

Soil Instruments Ltd. Registered in England. Number: 07960087. Registered Office: 3rd Floor, Ashley Road, Altrincham, Cheshire, WA14 2DT